

Lunchtime concert

Øyvind Mæland *AD UNDAS*

– *Sci-fi-Lieder fra*

Nordsjøen!

Vocal Stine Janvin Motland

Piano Sanae Yoshida

KOMMEN du vid meg?

Cello Øystein Sonstad

Loffet

12 noon

kr. 50,-

Improvisor and vocalist Stine Janvin Motland and pianist Sanae Yoshida team up with cellist Øystein Sonstad (Oslo String Quartet) to perform a selection of small scale yet powerful and intriguing works by Norwegian composer Øyvind Mæland. *AD UNDAS – Sci-fi Lieder fra Nordsjøen!* (2010) is a thirty minute song cycle that takes off from Øyvind Rimbereid's poem *Solaris Korrigert (Solaris Corrected, 2004)*. Mæland has produced several collaborations with Rimbereid in the past and *KOMMEN du vid meg?* (2012) is a miniature performance piece without song or lyrics. The principal characters are a couple, The Operator and Shiri, who are struggling to communicate with each other.

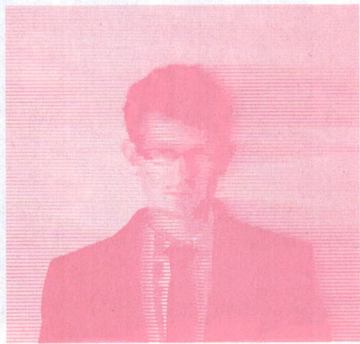


Photo Studio Lumo (m)